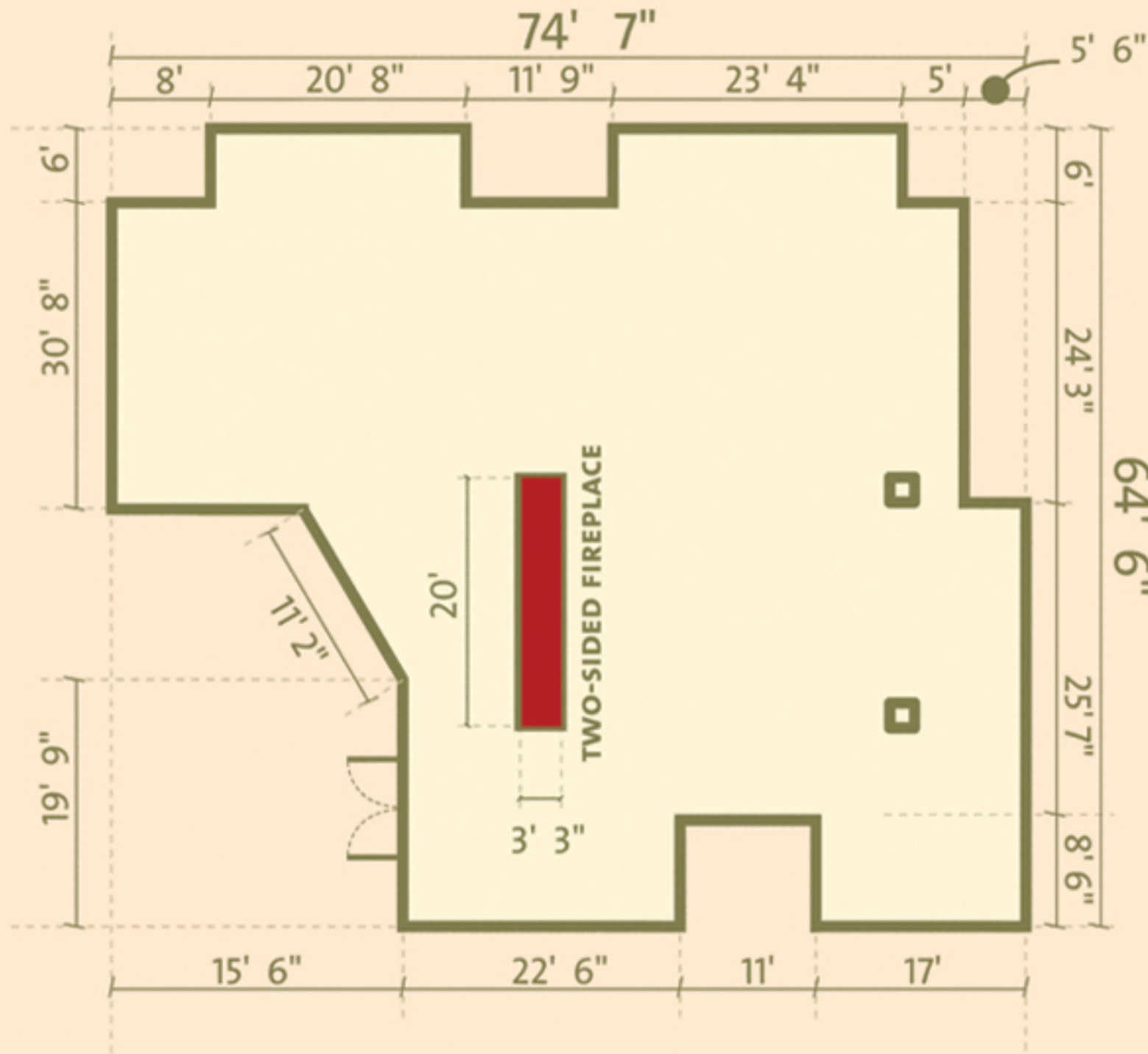


# MEETINGS FACILITIES

LAKE LEVEL (DIRECT ACCESS TO THE LAKE)



**BALLROOM**  
HEIGHT: 9'

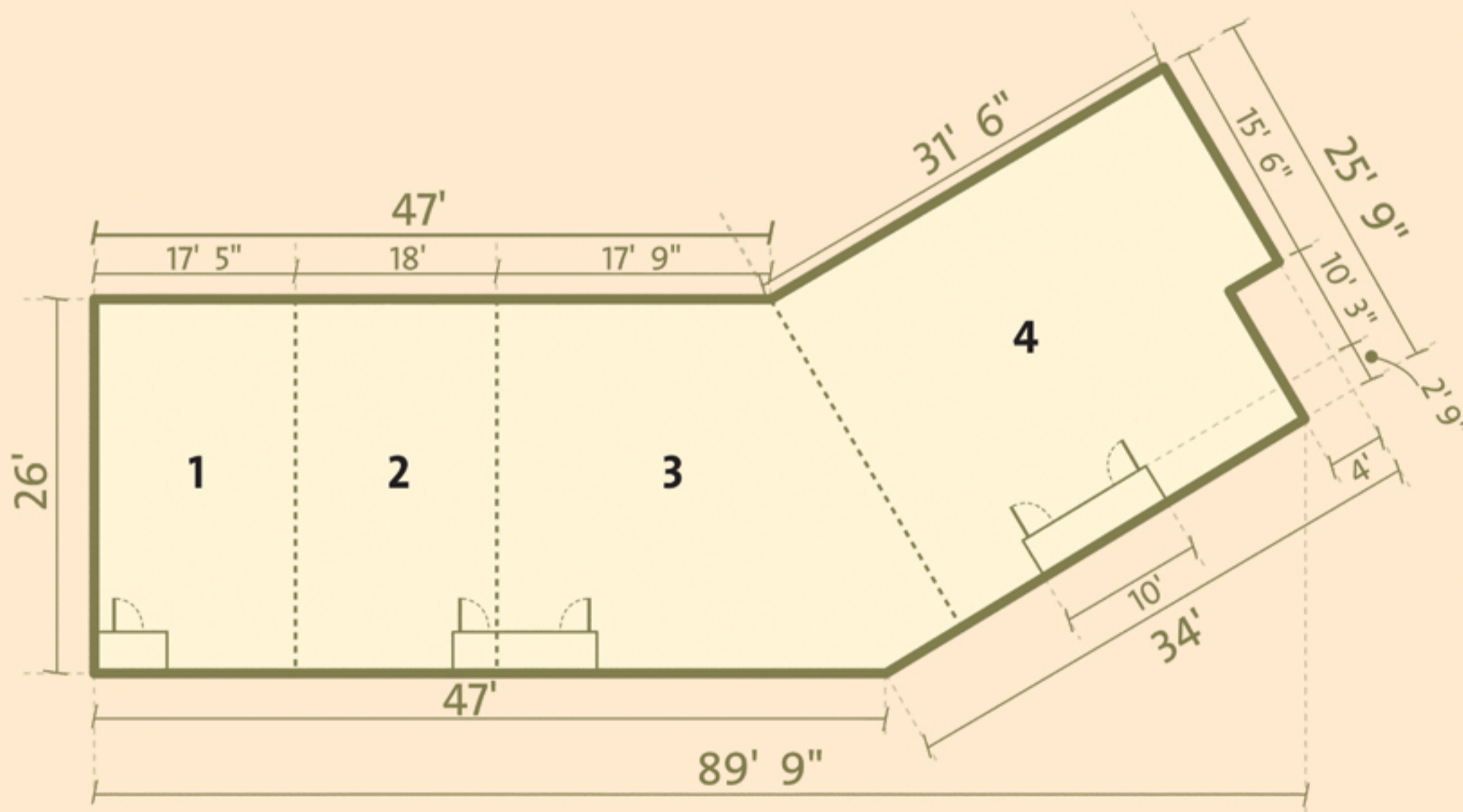
**AREA**  
3722 sq.ft.

**CAPACITY**

U	SCHOOL	THEATER	BANQUET
60	130	200	250

# MEETINGS FACILITIES

## LOBBY LEVEL



### GRAND LODGE MEETING ROOMS

HEIGHT: 8'

#### AREA

- 1: 364 sq.ft.
- 2: 364 sq.ft.
- 3: 689 sq.ft.
- 4: 779 sq.ft.

**TOTAL: 2196 sq.ft.**

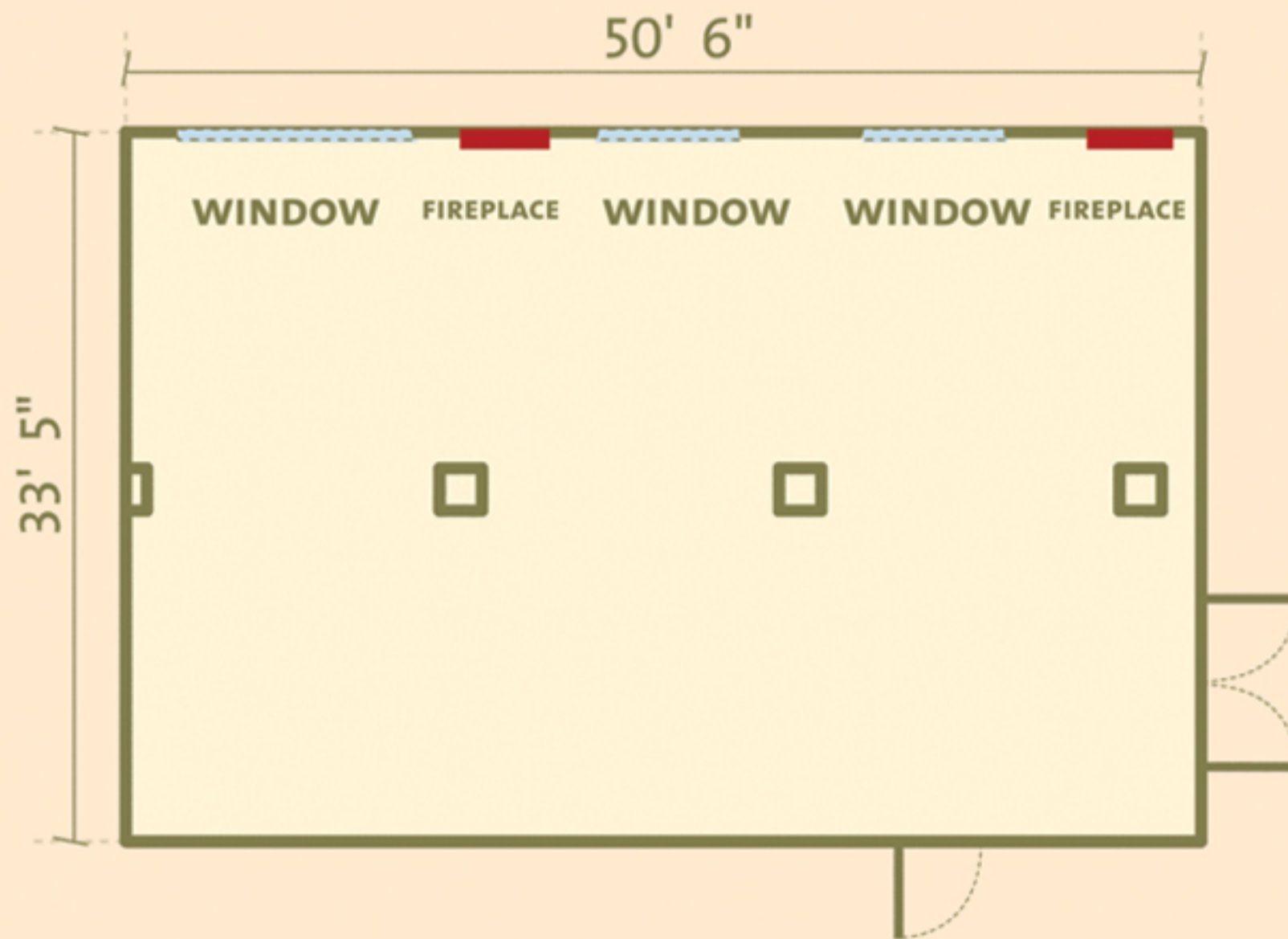
#### CAPACITY

	U	SCHOOL	THEATER	BANQUET
1:	12	12	20	20
2:	12	12	20	20
3:	24	32	45	40
4:	24	32	45	40
T:	50	70	100	120

T = 1/2/3/4

# MEETINGS FACILITIES

LAKE LEVEL (DIRECT ACCESS TO THE LAKE)



**R. DUBOIS ROOM**  
HEIGHT: 9' 6"

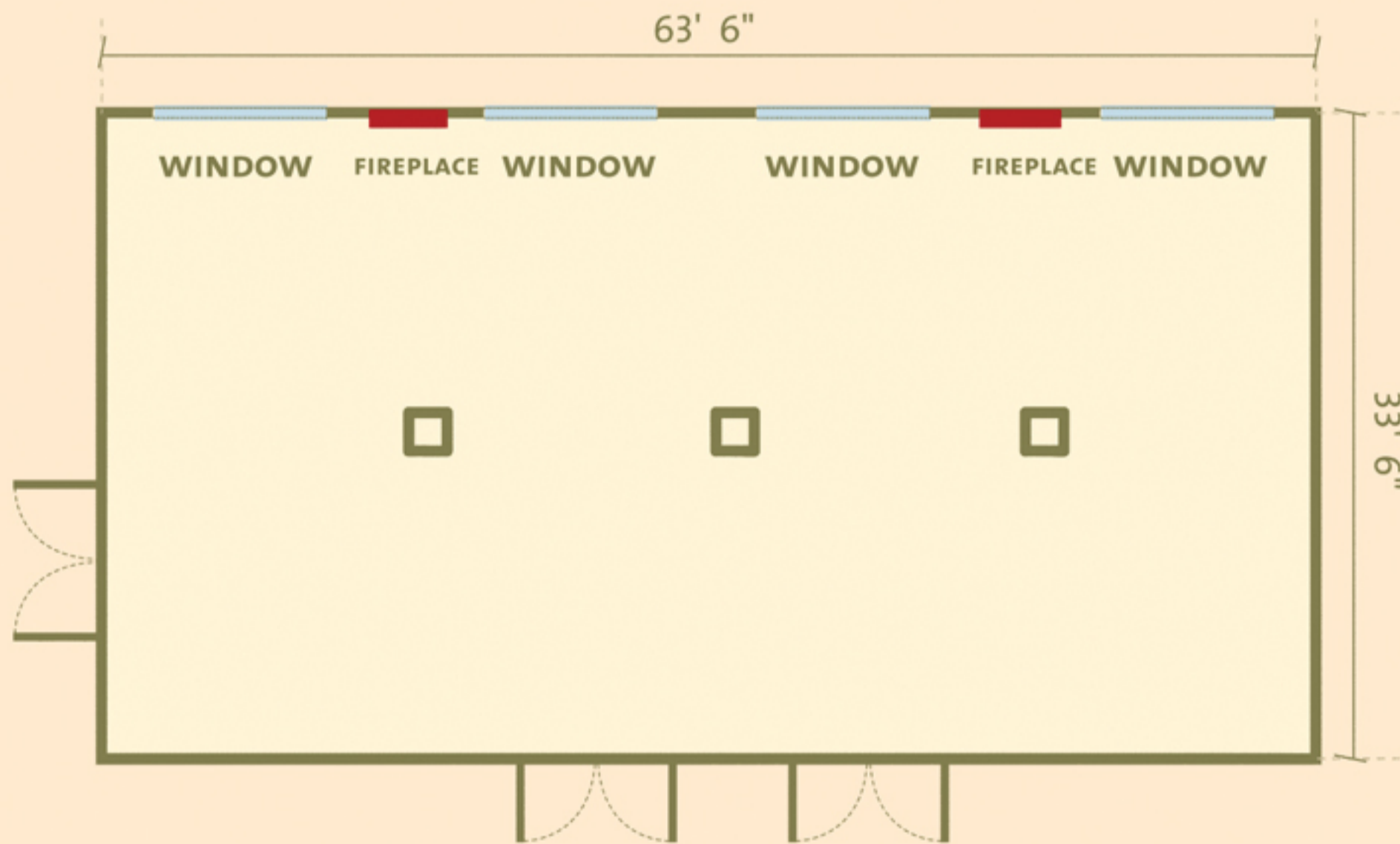
**AREA**  
1692 sq.ft.

**CAPACITY**

U	SCHOOL	THEATER	BANQUET
24	40	70	120

# MEETINGS FACILITIES

## SALON OUIMET / MEZZANINE LEVEL



**ROBERT C. HANLEY ROOM**  
 HEIGHT: 9' 6"

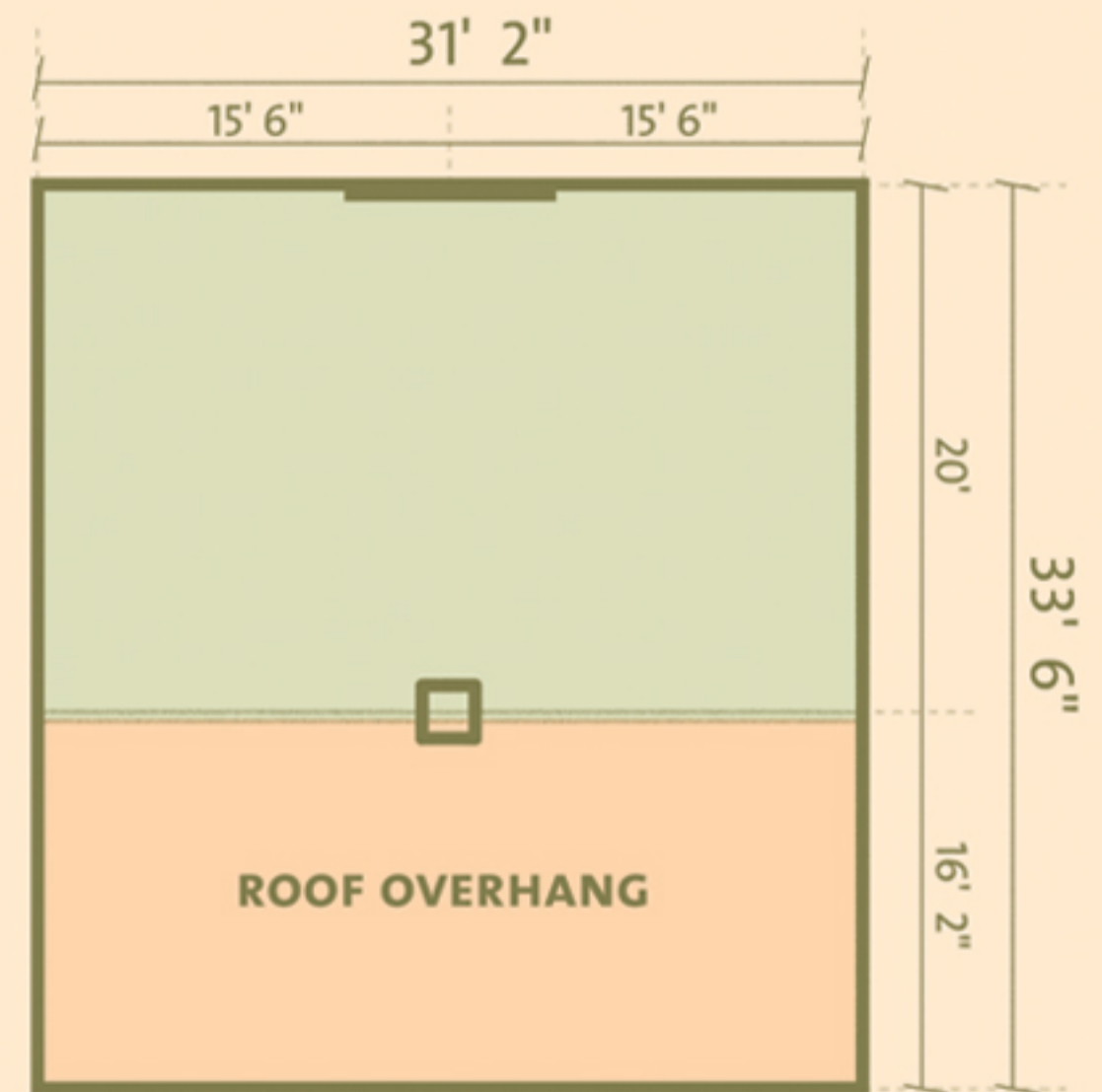
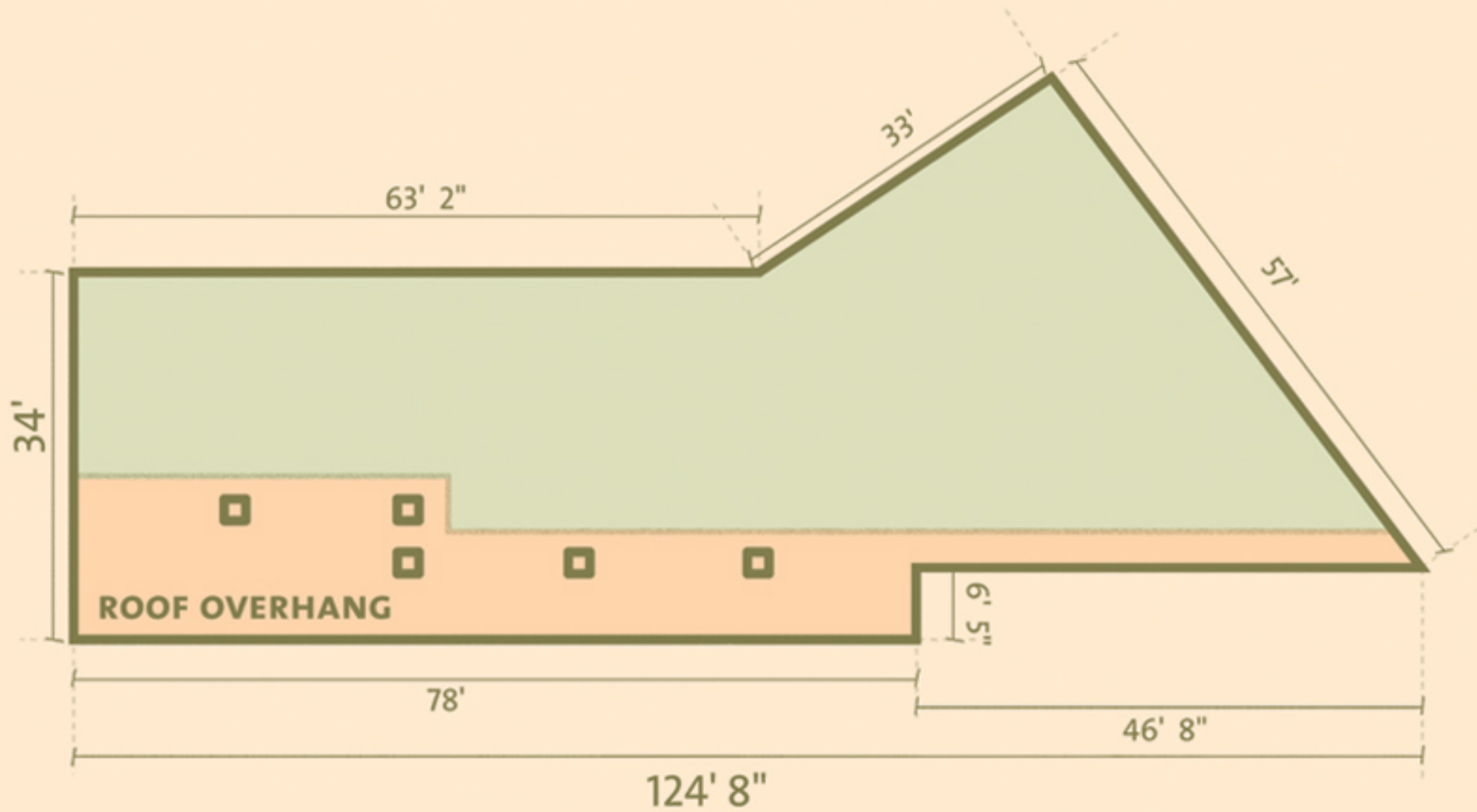
**AREA**  
 2110 sq.ft.

**CAPACITY**

U	SCHOOL	THEATER	BANQUET
24	40	70	120

# MEETINGS FACILITIES

## PENTHOUSE LEVEL

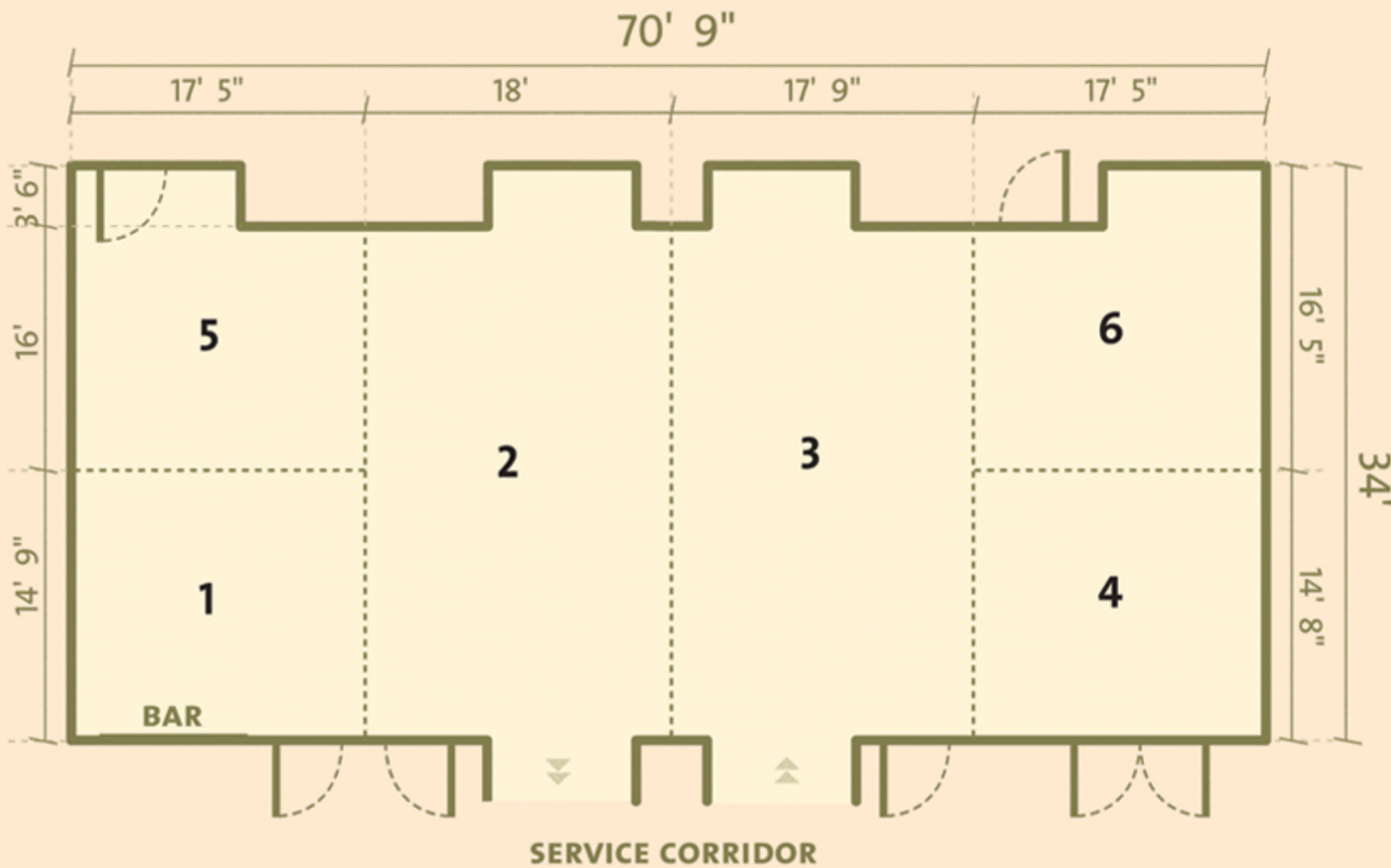


**MOUNTAIN VIEW TERRACE**  
AREA 3959 sq.ft.

**LAKE VIEW TERRACE**  
AREA 1054 sq.ft.

# MEETINGS FACILITIES

## LOBBY LEVEL



### VILLA BELLEVUE MEETING ROOMS

HEIGHT: 9' 7"

#### AREA

- 1: 258 sq.ft.
- 2: 549 sq.ft.
- 3: 541 sq.ft.
- 4: 258 sq.ft.
- 5: 280 sq.ft.
- 6: 280 sq.ft.

**TOTAL: 2166 sq.ft.**

#### CAPACITY

	U	SCHOOL	THEATER	BANQUET
1 & 5:	20	20	35	25
2:	20	20	35	25
3:	20	20	35	25
4 & 6:	20	20	35	25
T:	60	110	180	140

T = 1/2/3/4/5/6